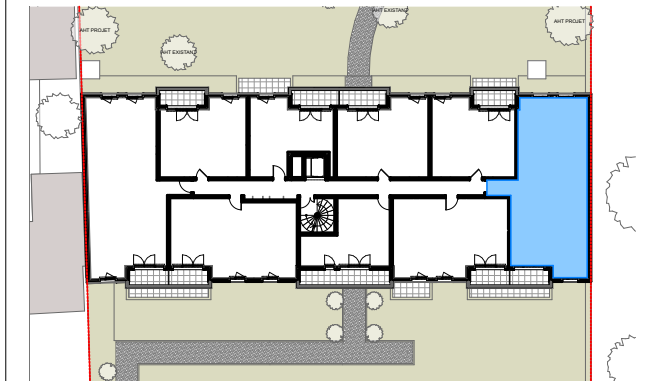


LE WINSTON

Deuil-la-Barre

RUE DES MORTEFONTAINES - DEUIL-LA-BARRE



N° Appartement :	D17
Type :	4 Pièces
Niveau :	1er étage
Exposition :	Sud et Nord

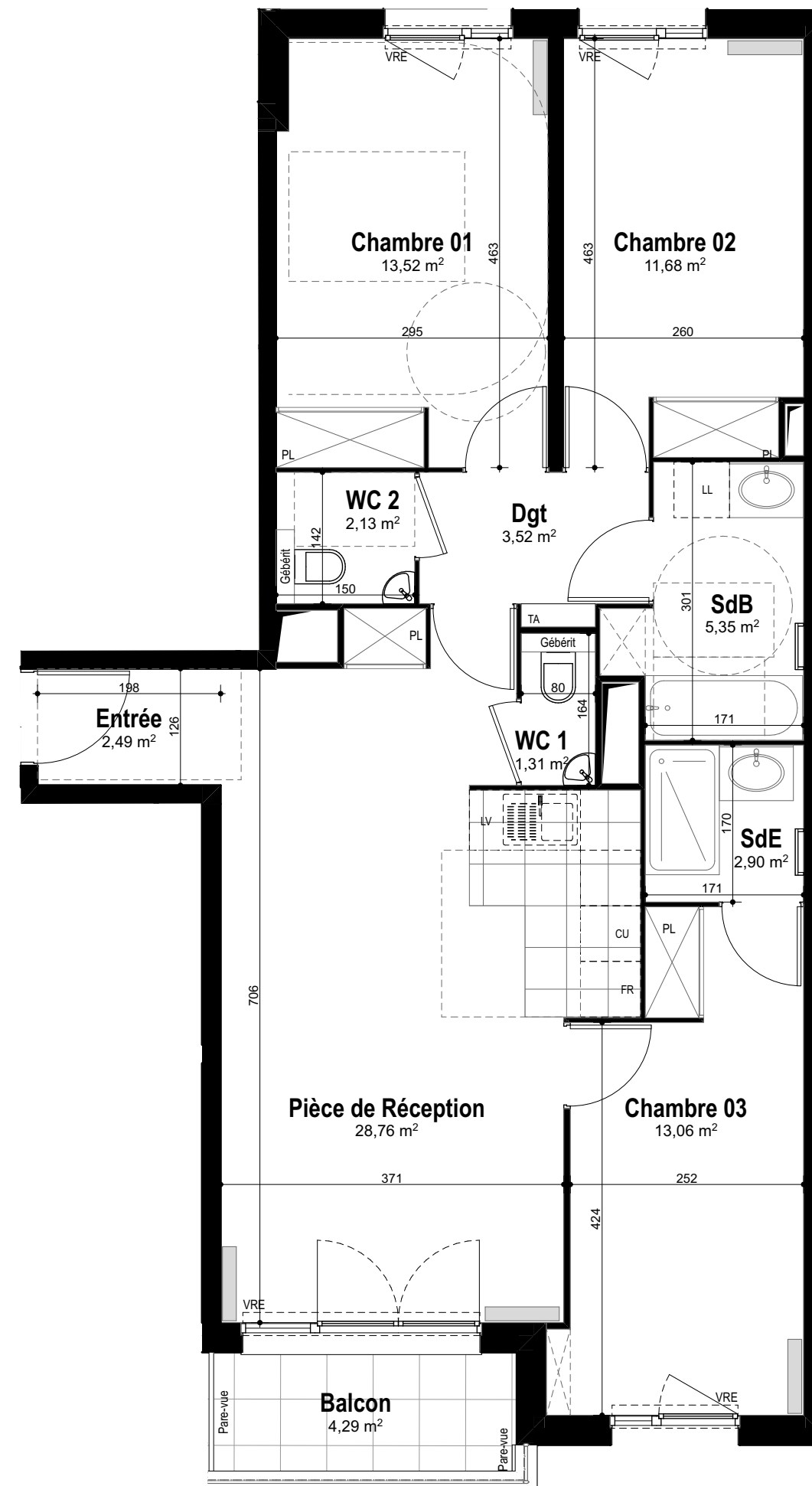
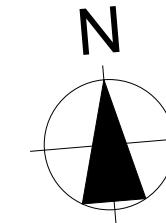
TABLEAU DE SURFACE (m²)

Entrée	2,49
Pièce de Réception	28,76
Chambre 01	13,52
Chambre 02	11,68
Chambre 03	13,06
Dgt	3,52
SdB	5,35
SdE	2,90
WC 1	1,31
WC 2	2,13


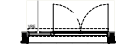
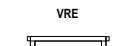

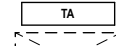
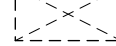
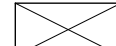
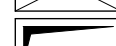

Surface Habitable Totale 84,72 m²

Balcon 4,29

Surface Privative Totale 89,01 m²



LEGENDE

-  : Fenêtre
-  : Porte fenêtre
-  : volet roulant électrique
-  : sèche serviette
-  : tableau électrique
-  : placard non fourni
-  : placard fourni
-  : gaine technique
-  : faux plafond ou soffite

